

Electrifying Drayage Alliance (EDA)

Connecting global ambition with local action to scale electric drayage at major ports

Road freight is a growing challenge – and ports are where the transition to electric begins.

Heavy-duty road freight accounts for ~8% of global CO₂ emissions. As companies face increasing pressure to reduce supply chain emissions, attention is shifting to ports — where large volumes of freight move through short, repeatable routes.

Drayage — the movement of containers between ports and nearby warehouses — is one of the most practical opportunities to begin reducing freight emissions today. Electric drayage produces zero tailpipe emissions and operates more quietly than diesel trucks, benefiting port workers and communities.

Momentum is building, with early deployments underway at major ports and increasing regulatory and commercial pressure accelerating the shift. Early movers are gaining experience and insight into how infrastructure is developing.

A coalition forming to accelerate progress

The EDA, led by Smart Freight Centre with support from The Climate Pledge, is bringing together companies across the freight value chain to accelerate electric drayage globally.

More than 30 global companies are already collaborating, including HP, Microsoft, Nike, Nestlé, LEGO, Kimberly-Clark and Reckitt, alongside leading logistics and infrastructure partners such as Maersk, DP World, AIT Logistics, C. H. Robinson, Forum Mobility and Macquarie Asset Management.

Early progress includes:

- Electric drayage initiated at priority ports (e.g., Port of Long Beach-Los Angeles).
- Infrastructure partnerships established to address charging and operational barriers
- Shared operational insights from early deployments informing best practices

Join the EDA

EDA is currently expanding its global alliance and establishing local coalitions at priority ports.

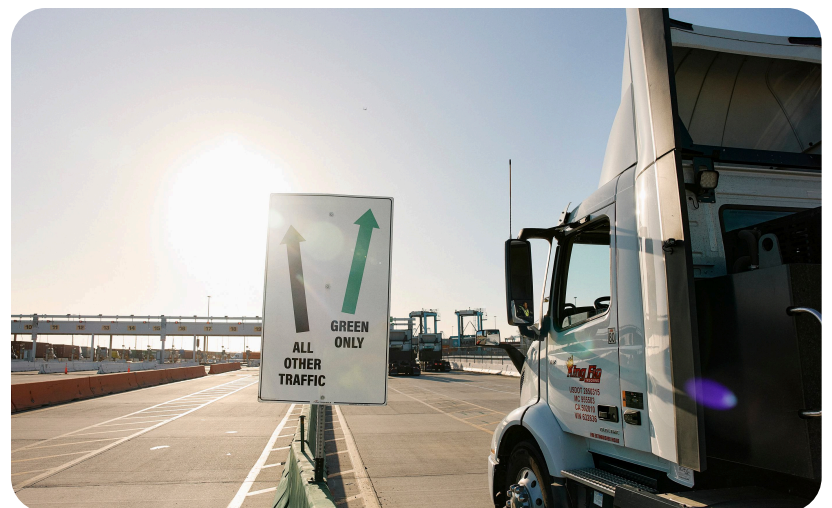
Join 30+ companies already reducing port emissions. Schedule a 30-minute conversation to identify opportunities within your supply chain and determine the best path for engagement.

What joining involves:

- Signal your company's desire for the industry to transition to electric
- Identify relevant ports in your supply chain
- Connect internal logistics and transportation teams into EDA activities
- Participation in working sessions and knowledge sharing if relevant
- Explore engagement in local port coalitions as they develop

Contact

Selma van den Born
eda@smartfreightcentre.org



What the Alliance does

EDA provides a structured, low-friction way for companies to begin engaging in electric drayage:

- Connects companies with relevant partners across the value chain
- Facilitates engagement with relevant stakeholders at priority ports
- Shares early insights and best practices from emerging deployments
- Highlights opportunities to integrate electric drayage within existing operations
- Supports information-sharing and collaboration to address key barriers

Why companies participate

EDA enables companies to take practical first steps in a rapidly evolving space:

- Enable an industry pathway to decarbonize heavy-duty road freight
- Improve community health outcomes by reducing air and noise pollution for port workers and surrounding communities
- Join industry leaders as infrastructure and regulatory developments continue to evolve
- Gain operational insights from early deployments at priority ports
- Connect logistics teams with relevant partners and coalitions

Participation is free and flexible — companies can engage at their own pace.

To see a list of all current EDA members list and other details, please visit our [EDA project page](#).

The big picture

Smart Freight Centre (SFC) is a globally active non-profit organization for climate action in the freight sector. Our goal is to mobilize the global logistics ecosystem, in particular our members and partners, in tracking and reducing its greenhouse gas emissions. We accelerate the reduction of logistics emissions to achieve a zero-emission global logistics sector by 2050 or earlier, consistent with 1.5° pathways.

The Climate Pledge (TCP) is a commitment to reach net-zero carbon emissions by 2040. It brings the world's top companies together to accelerate joint action, cross-sector collaboration, and responsible change. SFC and TCP have partnered to launch and implement the EDA.

Learn more at smartfreightcentre.org and theclimatepledge.com.

