

# Measuring and Reporting Emissions Guidance for the Transport Sector

 Transportation & Logistics

 Worldwide

## Quick Overview

Companies participated in the development of an industry standard for the accurate reporting of emissions data across transportation and logistics. Now, partner Smart Freight Centre is pushing for mass adoption.

This project aims to empower transportation companies to better understand and track their logistics emissions on a granular, operational level—and aims to quantify the footprint of end-to-end logistics emissions. Using the Global Logistics Emissions Council (GLEC) Framework V3.0, shippers, carriers, and logistics service providers can align by following the same best-practice guidance for calculating and reporting logistics emissions.

## Why This Project Matters

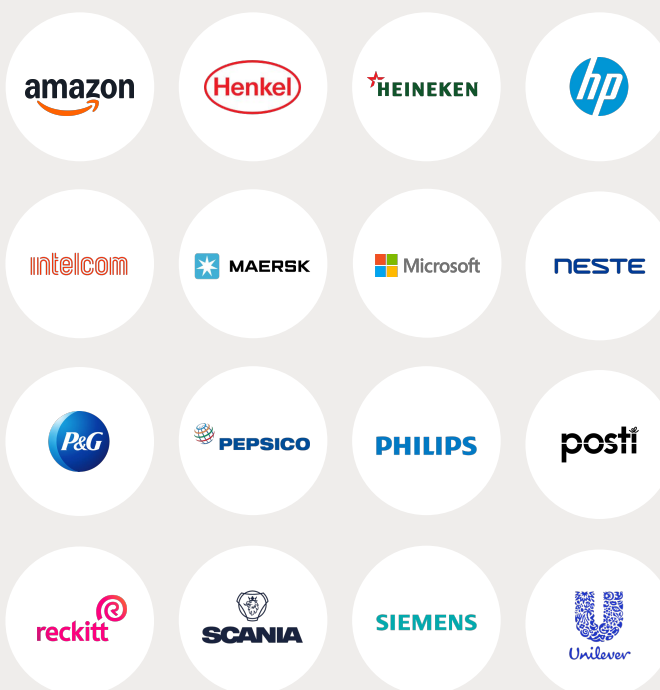
- Most transportation and logistics companies report their emissions data in different ways. This inconsistency makes it impossible to track impact and progress.
- Freight transportation and logistics activities currently contribute 8-10% of global greenhouse gas (GHG) emissions, and demand for freight transport is expected to almost triple by 2050, according to the International Transport Forum.
- Failure to reach climate targets could have massive economic impacts, and the expected cost of an increase of 2.0°C is already 11% of the world's GDP.

## Expected Results

- Standardization and accuracy: The GLEC Framework and ISO 14083 can help standardize logistics GHG emissions reporting, improving accuracy and comparability across the industry.
- Informed decision-making: Companies can be empowered to make better decisions regarding supply chain optimization and emissions reduction, leading to more sustainable logistics operations.
- Regulatory alignment: Broader acceptance of these standards can help companies stay ahead of regulatory requirements and meet global climate goals.
- Long-term emissions reduction: Over time, widespread adoption is expected to help increase carbon visibility by improving emission data sets and the exchange of data, which may be powerful in helping companies make long term industry decisions.



## Companies Involved in Framework Design



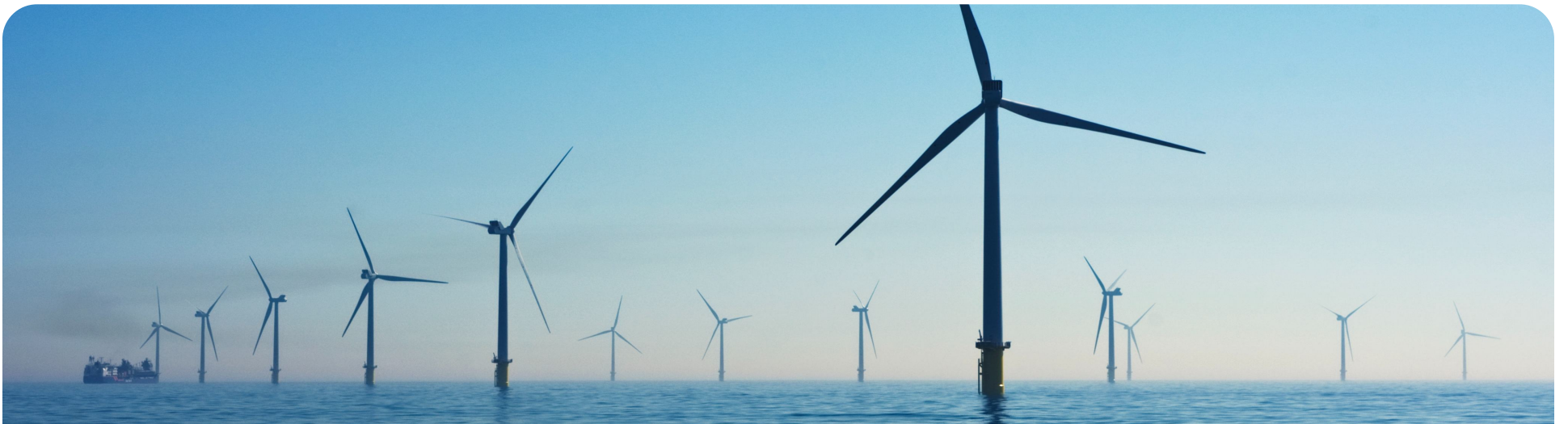
## Goal

Unify a whole industry behind one reporting standard—for international consistency, multi-modal transparency, and more sustainable practices.



## Adopt the GLEC Guidance

Scan the QR code or visit [amzn.to/logisticsemissions](https://amzn.to/logisticsemissions) to let the Pledge team know you are interested in learning more about the GLEC guidance, methodology, and how to implement it into your operations. Have questions? Contact us at [wvs-strategicprojects@amazon.com](mailto:wvs-strategicprojects@amazon.com).



## The Big Picture

The Climate Pledge launched a series of collaborative projects to help tackle some of the planet's biggest climate change challenges alongside the best in the business. These joint action projects bring signatories together to enable and scale a solution that aligns with the pillars of the Pledge and leads to measurable results.

Learn more at [theclimatepledge.com/jointaction](https://theclimatepledge.com/jointaction).



## The Pledge

The Climate Pledge is a commitment to reach net-zero carbon emissions by 2040. It brings the world's top companies together to accelerate joint action, cross-sector collaboration, and responsible change.

Learn more at [theclimatepledge.com](https://theclimatepledge.com).



## GLEC Framework V3.0

The GLEC Framework V3.0 was announced in 2023 at the World Economic Forum by the Smart Freight Center, Amazon, The Climate Pledge and in partnership with the World Business Council for Sustainable Development and other leading organizations. Learn more at [amzn.to/GLEC](https://amzn.to/GLEC).